

# KINGSTON LEISURE CENTRE

## A new leisure centre for Kingston town centre

Providing inclusive and accessible leisure and well-being services for our borough's residents is a key part of the council's commitment to reduce inequalities and create a fairer borough.

The council is committed to building a new swimming pool and leisure centre on the site in Kingston town centre, which will deliver the range of activities that residents and stakeholders said they wanted to see within an affordable budget.

Thank you to all of those who have taken the time to let us know their thoughts about the proposals. We are now hosting the final engagement events to provide your feedback before we look to submit a planning application for the project in the next few months.

### Meet the team



**Chris Jones**  
Project Director



**Siddiqa Islam**  
Assistant Director of Major Projects



**Tom Fairey**  
Development Partner



**Gert-Jan Peeters**  
Main Contractor



**Richard Thompson**  
Project Manager



**Bastin Bloomfield**  
Architect

### Today you can:



**Meet the team and ask questions about the project**



**See how your feedback has shaped the proposals**

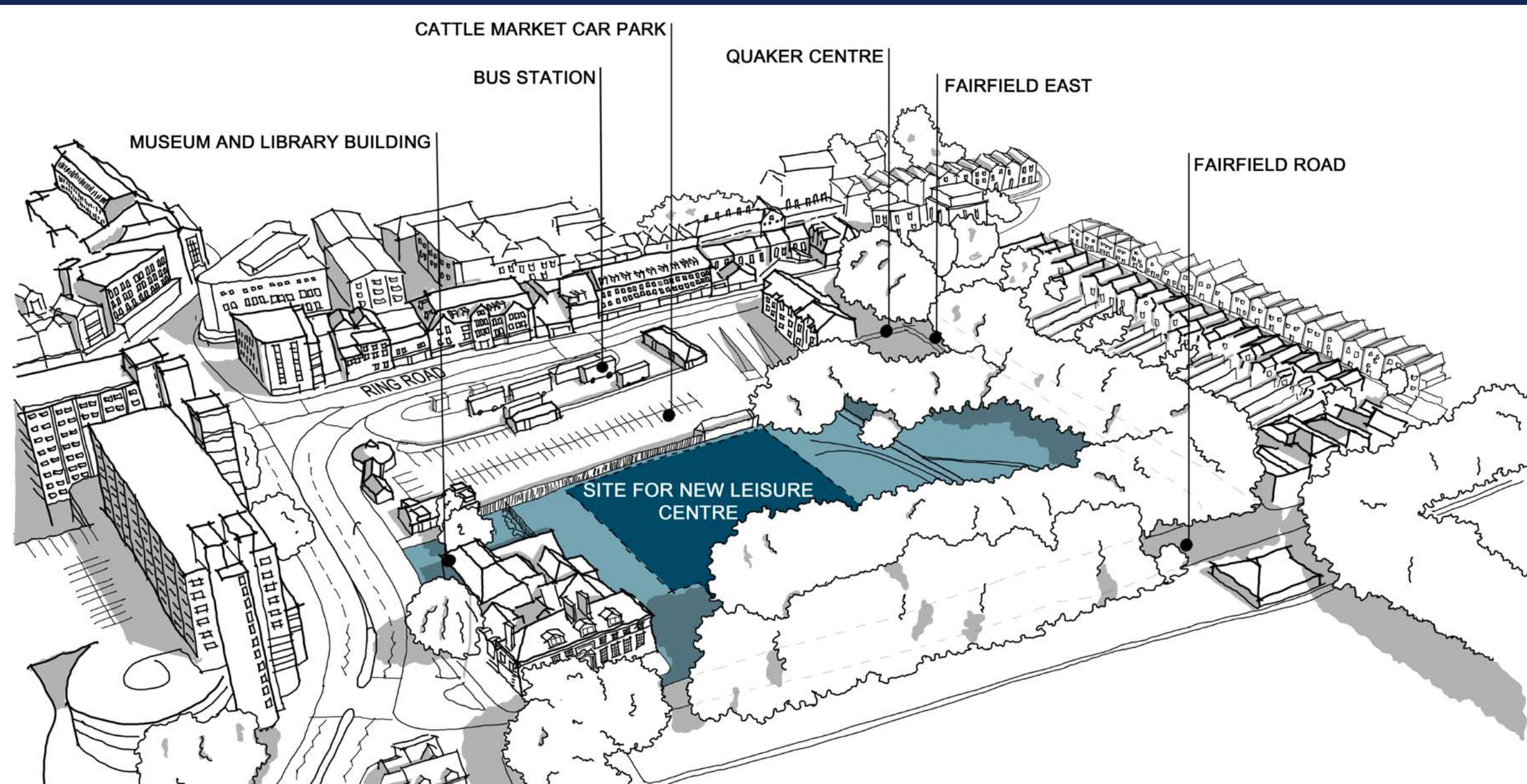


**View the landscaping proposals and the suggested building materials**



**Let us know your thoughts**

## Facilities residents want, within an affordable budget



### Ensuring deliverability of the project

In a change from the previous project, **we have brought our construction partner on board at a much earlier stage.** This is so that we are able to have **more concrete assurances around costs and programme** as the project progresses to completion.

**Leisure experts Pellikaan** have been appointed as the construction partner for the project, and this will be one of the **over 110 projects they have helped to create in the UK.** They have **input into the design** of the scheme to **ensure that it is deliverable within the budget** we have, and are **confident on the timescales for construction.**

The project continues to be **overseen by Alliance Leisure**, utilising the UK Leisure Framework to bring on board **a team of high quality consultants for the scheme.**

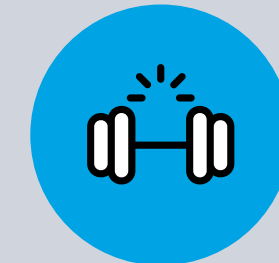
### WHAT'S IN THE NEW LEISURE CENTRE?



**25m competition pool**



**Learner pool**



**150 station fitness gym**



**Group cycle studio**



**Four court sports hall**



**Indoor soft play**



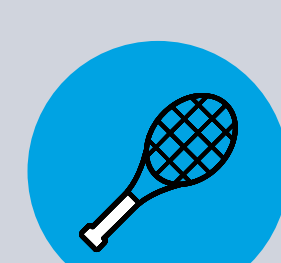
**Health suite**



**Café**



**Activity studios**



**Squash courts**



**visit:**  
[www.transformkingston.co.uk/leisure-centre](http://www.transformkingston.co.uk/leisure-centre)

scan  
me →



July 2024





# KINGSTON LEISURE CENTRE

## Our proposals

### Our vision



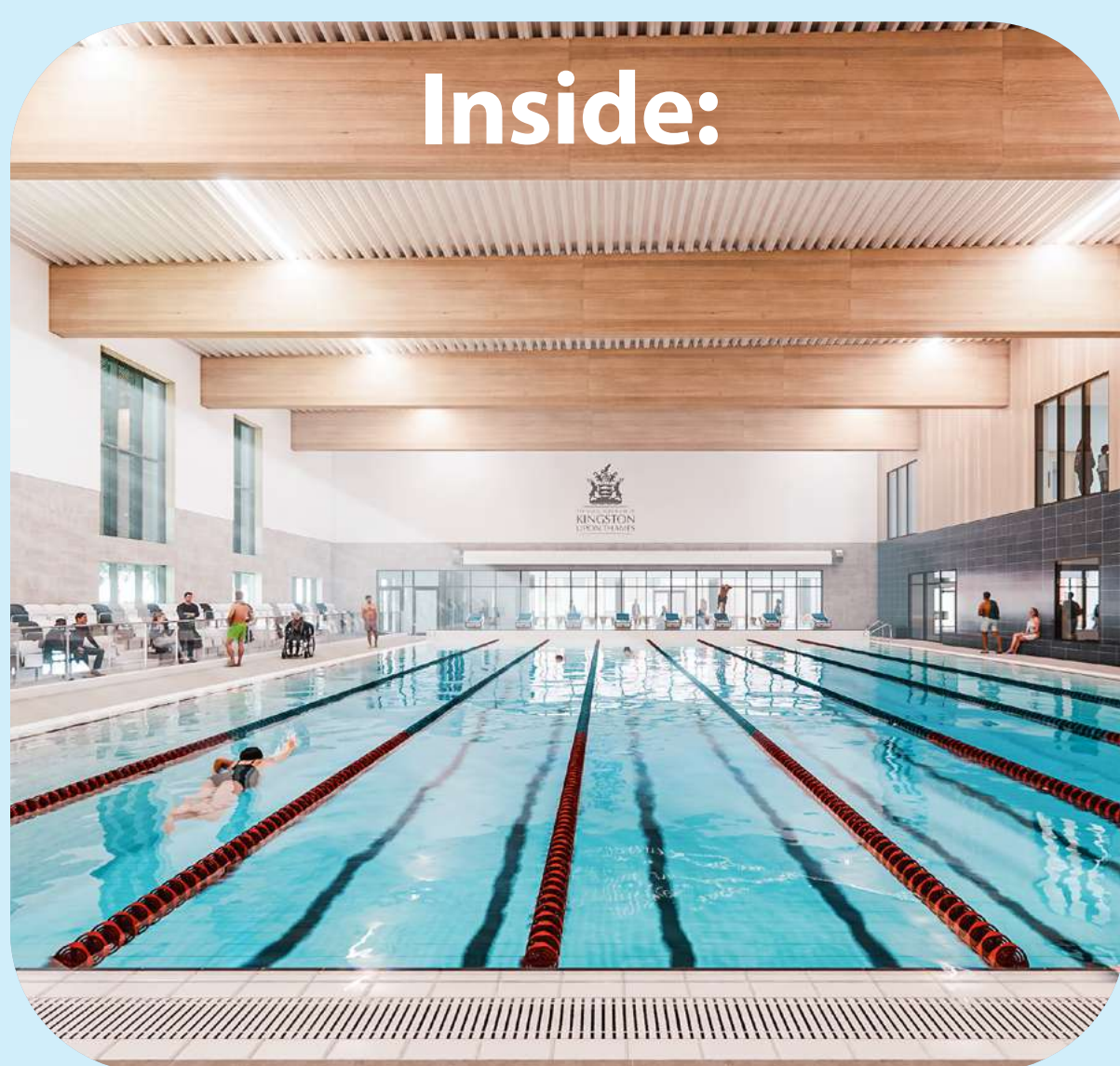
View of the new access link from Wheatfield Way, and the museum garden

### Key aims:

- To deliver the range of **activities that residents and stakeholders said they wanted to see**, in the heart of Kingston town centre
- To ensure that **the building is as accessible and inclusive as possible** for all in our communities to enjoy
- To create a **sustainable scheme** that helps us **to meet our carbon net zero targets**
- To promote a **strong focus on wellbeing and social interaction, with better connectivity** through the site, **and access to existing and improved green spaces**
- To build the scheme **as quickly as possible** within an **affordable budget**

### Key features of the new leisure centre

#### Inside:



- 25m x 8 lane pool with movable floor
- 150 spectator seating
- 20m x 10m learner pool with movable floor and interactive splash
- Fitness gym with 150 stations
- Group cycling studio

#### Inside:



- 3 studio spaces
- 2 squash courts
- 4 court sports hall
- Health suite
- Café (100 covers)
- Indoor soft play
- Changing facilities for all genders (wet and dry)

#### Outside:



- A new attractive plaza, entrance and arrival space
- Strong visual presence from town centre
- Upgraded play & external areas
- Cycle parking (long + short stay)
- Accessible car parking
- Coach parking



visit:  
[www.transformkingston.co.uk/leisure-centre](http://www.transformkingston.co.uk/leisure-centre)

scan  
me →



July 2024





# KINGSTON LEISURE CENTRE

## Our proposals

### Ground floor plan

The ground floor has a welcoming entrance and café, a soft play area, 3 exercise studios and the two pools with wet changing facilities that look out onto the newly landscaped space.



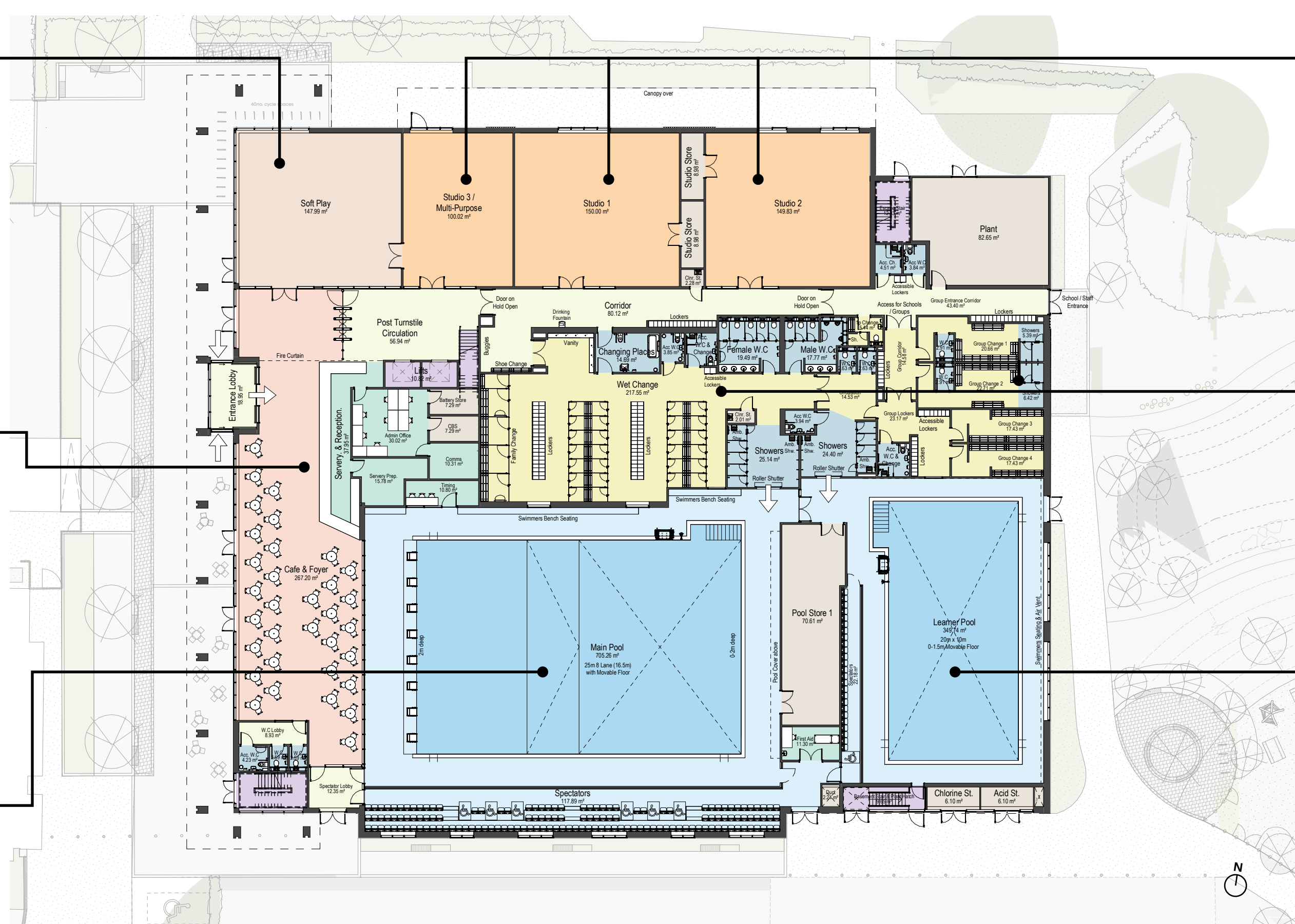
Soft play



Café & foyer



Main pool



**Key:** ■ Lifts/stairs ■ Storage/plant space ■ Circulation space



x3 exercise studios



Wet changing rooms



Learner pool

### First floor plan

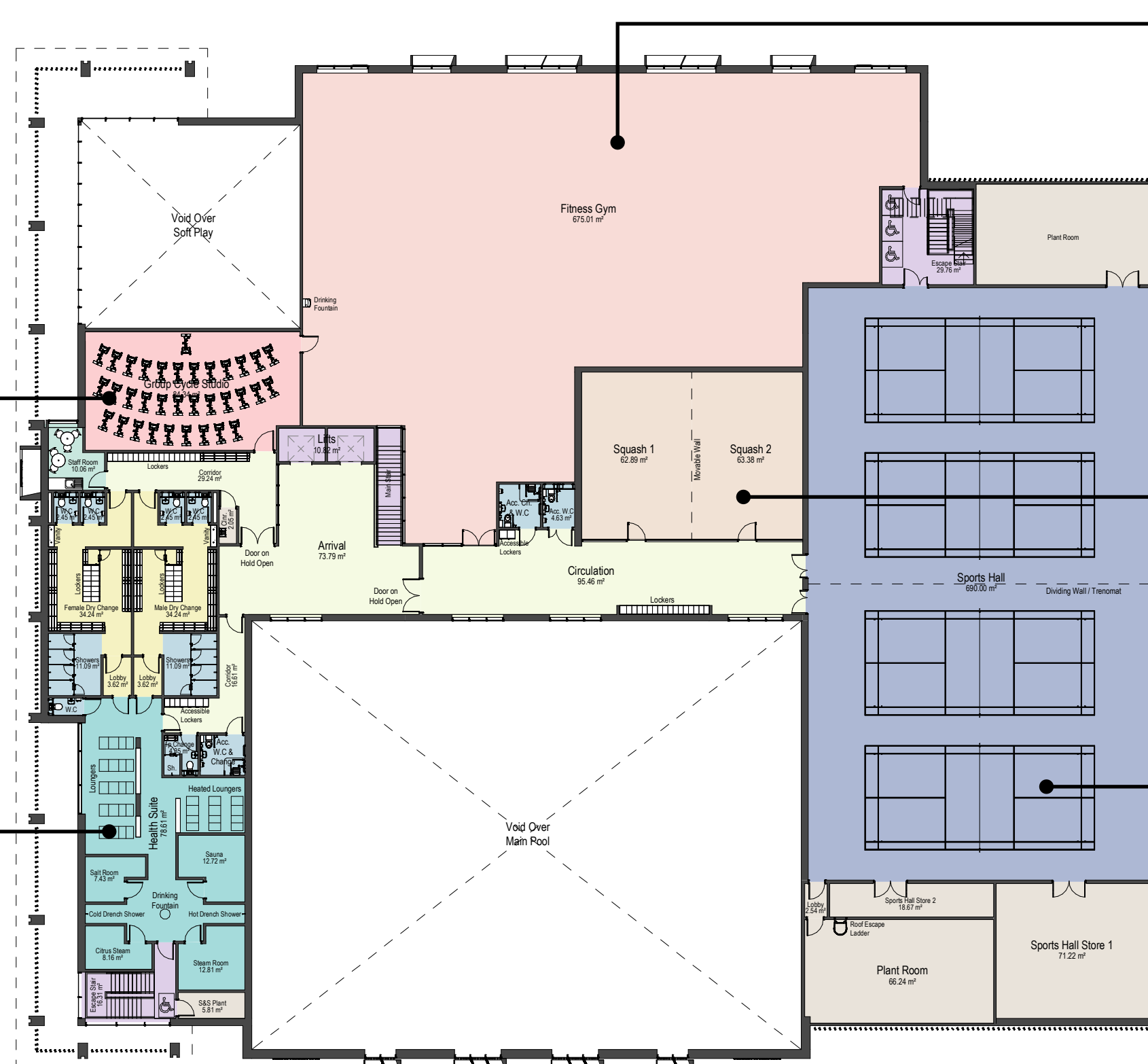
The first floor includes a large well equipped fitness gym, group cycle studio, squash courts, the four court sports hall and dry changing facilities, alongside the new health suite.



Group cycle studio



Health suite



Fitness gym



x2 squash courts



Sports hall



visit:  
[www.transformkingston.co.uk/leisure-centre](http://www.transformkingston.co.uk/leisure-centre)

scan  
me →



July 2024





# KINGSTON LEISURE CENTRE Look & feel of the new building

The modern design respects nearby buildings with similar rhythm, verticality, and spacing. Key features highlight entrances with inviting landscaping and materials. It uses durable, high-quality, sustainable materials like terracotta fins and concrete columns.



Illustrative aerial view from the north west and locations of other views



A View of park entrance



B View from north east showing window detail



C View of pedestrian link connecting Library & Museum to new leisure centre



D View of pedestrian link connecting Library & Museum to new leisure centre



E View of the new access link from Wheatfield Way, and the Museum garden



F View from the south east and the children's play area



G View from the Cattle Market car park





# KINGSTON LEISURE CENTRE Landscape & public realm

## More opportunities for seating as requested:

The landscape design will create an attractive space with walking routes and a range of spaces to sit and socialise.



## Increasing biodiversity with wildflower meadows, orchard and community gardens:



We have created a community growing and garden space, and integrated the existing trees into the new proposals. We will ensure these spaces are well maintained.



## New spaces for play:



We have enhanced the play space offer in the eastern part of the site, and will be placing new equipment on the Fairfield to allow for continued safe access to play spaces during construction.



visit:  
[www.transformkingston.co.uk/leisure-centre](http://www.transformkingston.co.uk/leisure-centre)

scan  
me →



July 2024





# KINGSTON LEISURE CENTRE

## Energy and sustainability

We aim to create a building centred on economic, social, and environmental sustainability. By following principles that consider the entire life-cycle and reuse of materials, we will be using on-site renewable energy to help us achieve our carbon net zero targets.

The design maximises daylight, integrates with nature, and uses existing trees for shading, meeting the highest sustainability standards. Below are some of the key ways in which we are designing a sustainable, future-proof leisure centre for Kingston.



### Key sustainability features

#### Operational energy:

**Refers to energy a building consumes during use, including heating, cooling, lighting, and powering appliances. Our design is sustainable in this regard:**

- Aiming for "excellent" BREEAM, a top sustainability standard.
- Passive design for natural light and ventilation.
- Low-energy systems for heating, cooling, and lighting.
- Promotes accountability for energy use.
- Uses zero carbon energy sources.
- Designed to adapt to future climate changes.

#### On-site renewable energy:

- Photovoltaic (solar) panels on roof to generate energy.
- On site battery storage for peak demand.

#### Improving biodiversity:

- Minimum 10% Biodiversity Net Gain.
- Urban Greening Factor - improve the existing green infrastructure.

#### Environmental management:

- Permeable landscaping and Sustainable Drainage (SuDS) to slow and manage surface run-off.
- Connection to a district heating network.



**visit:**  
[www.transformkingston.co.uk/leisure-centre](http://www.transformkingston.co.uk/leisure-centre)

scan  
me →



July 2024





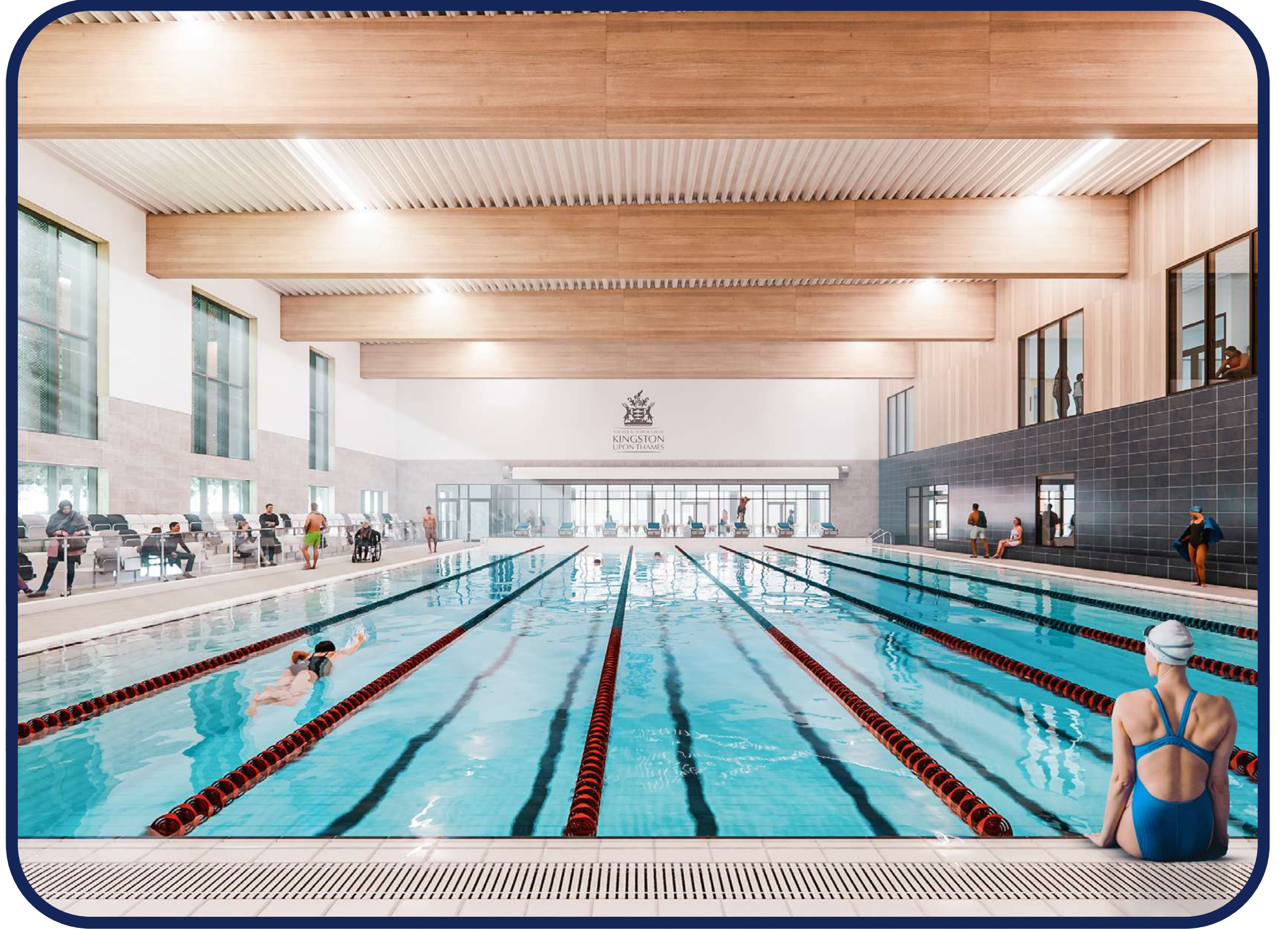
# KINGSTON LEISURE CENTRE

## Accessible & inclusive

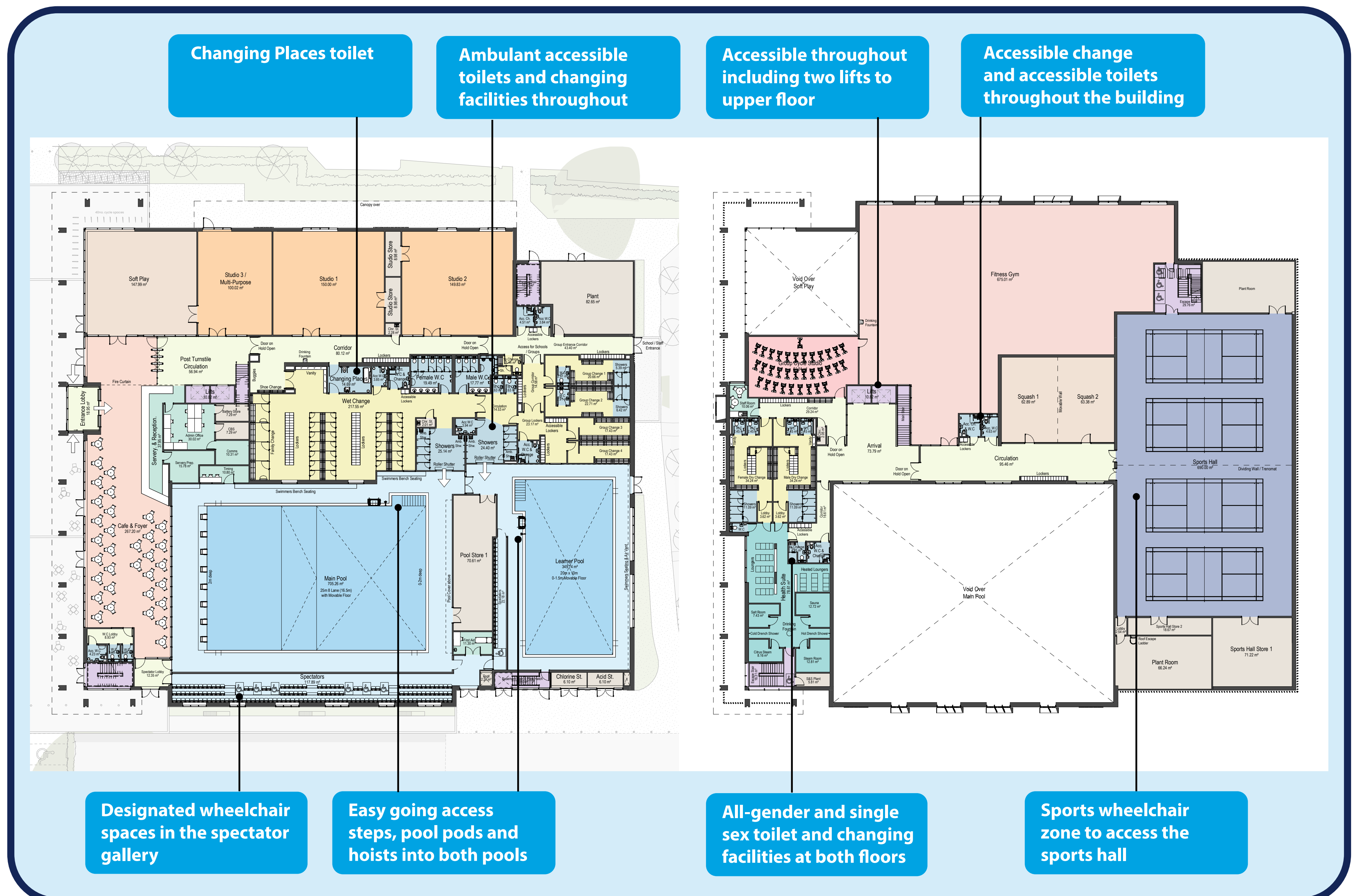
We are committed to providing an inclusive design which creates a safe and accessible environment where everyone can benefit from the opportunities available.

### This includes:

- Ensuring that the leisure centre is fully accessible and allows everyone to access all facilities equally
- There will be level access throughout the building as well as designated wheelchair accessible showers, toilets and changing rooms
- Easier access into the pools with accessible steps, pool pods and hoists
- A fully accessible health suite, meaning wheelchair access will be available to all steam and sauna facilities
- Two parking bays for Blue Badge holders will be available and located close to the main entrance



We have taken on board feedback from local disability groups and those with a lived experience of disability to ensure that we select the best materials for the building from an accessibility perspective, e.g. tiles and other flooring, colours of signage and lighting options.



visit:  
[www.transformkingston.co.uk/leisure-centre](http://www.transformkingston.co.uk/leisure-centre)

scan  
me →



July 2024

**rl.**  
Roberts Limbrick





# KINGSTON LEISURE CENTRE

## Responding to your feedback

Thank you to the 278 people who attended our events in January 2024. 125 of you gave feedback in person as well as 152 people who responded online.

We appreciate all of your feedback, here are our responses to key questions and comments raised.

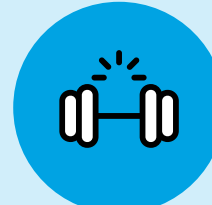
### Your top priorities



The **25m competition pool** was overwhelmingly ranked most important by the majority of respondents.



The **learner pool** was the second most popular element.



The **fitness gym** was the third most important part of the leisure centre to those who responded.

## Answering your questions

### Indoor



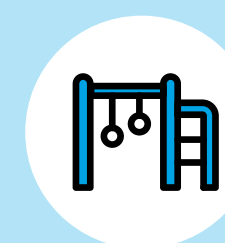
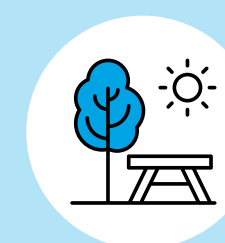
#### Swimming pool:

- **What fun elements will be included in the pool?**
- Both swimming pools will have a moveable floor installed, with the learner pool able to be changed into a splash zone with lights and water fountains.
- **How does the moveable floor work?**
- A moveable floor in a swimming pool floats on top of the water and is pulled down by stainless-steel cables. The floor has holes in it like a sieve and the water passes through the floor to adjust to the desired height.
- **Is it possible to provide a hydrotherapy pool?**
- The overwhelming message from residents is that a main swimming pool and learner pool are required in Kingston and this is what is being delivered. For a hydrotherapy pool to work correctly, consultation rooms and other facilities are required, and we do not have the space available on the site. It is also not possible to heat either of the planned pools to the required temperature. The temperature of the learner pool will be warmer than the main pool, making it more appropriate for people that may need to move more slowly, whilst meeting the needs of as many people as possible.
- **Will the swimming pool and changing rooms be accessible?**
- Providing opportunities for people of all abilities, ages and backgrounds to participate in sport, leisure and community focussed activities is one of the key aspects of the project. Accessible changing rooms and toilets will be provided for wet and dry activities. A Changing Places toilet will also be provided in the facility. For more details please see information board 7.

#### Sports hall:

- **What kind of sport will be possible?**
- In line with the feedback that has been received telling us the activities people want to take part in, the sports hall has been designed to accommodate the following:
  - 5-a-side football
  - Netball
  - Badminton
  - Pickleball
  - Basketball
  - Volleyball
  - Cricket (nets)
  - Table tennis

### Outdoor



#### Public realm:

- **How will you ensure the maintenance and upkeep of the plants?**
- The maintenance and upkeep of the landscaped areas will be included in the Council's existing Grounds Maintenance Contract.
- **What is Sustainable Drainage and is it safe?**
- Sustainable Drainage (SuDS) offers a more natural approach to managing drainage systems in and around developments than traditional drainage systems. The majority of the time this area will be dry and it will only hold water for a short period of time following heavy rainstorms before naturally draining away into the ground.

#### Play:

- **What will happen to the play area during construction?**
- The existing play area and green space will not be available during construction. However, we understand that this is a well used play area and will be providing alternative play facilities in Fairfield Recreation Ground. The Council's Green Spaces team will consult on the mix of equipment. It will be installed before the existing provision becomes unavailable, and will remain in the Fairfield after the new leisure centre is built.
- **How will the play space cater to a range of ages?**
- The play area will cater for 0-8 year olds in line with the existing provision.
- **Can we have outdoor football/netball/basketball courts?**
- There is not the room on the site to offer these facilities and they are available at other locations across Kingston.

#### Parking:

- **How will you accommodate the level of car and cycle parking required?**
- Car parking will be met through the existing car parks in the town centre, including the Cattle Market car park. Cycle parking will be provided in line with planning regulations to meet the needs of both staff and users.
- **Why is the coach parking next to the play area?**
- Coach parking is required to support the delivery of school swimming lessons and events such as swimming galas. The location of the children's play area has moved to a more prominent, safe, location.



visit: [www.transformkingston.co.uk/leisure-centre](http://www.transformkingston.co.uk/leisure-centre)

scan  
me →



July 2024





# KINGSTON LEISURE CENTRE

## Next Steps & Find Out More

### Indicative timeline



**JANUARY 2024**



**Information sessions**  
Feedback used to develop design further

**MARCH 2024**



**Committee approval**  
and appointment of contractor

**We are here**

**AUTUMN 2024**



**Submit planning application**

**JULY 2024**



**Public engagement #2**  
Showing how the feedback received has been used, and changes to the scheme

**Subject to planning decision**

**EARLY 2025**



**Report to committee for approval to build leisure centre**

**SPRING 2025**



**Earliest start on site**

**SPRING 2027**



**Estimated opening to the public**

This timeline is indicative to show the key steps involved in the process and is subject to change.  
We will inform you of changes and update you with the latest information.

Thank you for taking the time to read through this information - we hope you found it useful.  
Please let us know what you think of our initial proposals, either at the event or online:

[www.transformkingston.co.uk/leisure-centre](http://www.transformkingston.co.uk/leisure-centre)



**Get in touch by e-mail**

[transformkingston@kingston.gov.uk](mailto:transformkingston@kingston.gov.uk)



**Get in touch by telephone**

**020 8547 5000**  
(please leave your details and someone will get back to you)



**Find out more on our website**

Scan the QR code to visit the website



**visit:**  
[www.transformkingston.co.uk/leisure-centre](http://www.transformkingston.co.uk/leisure-centre)

scan me →



July 2024

